

Quality, the best value.



# CB3 High Pallet Box

## Large volume



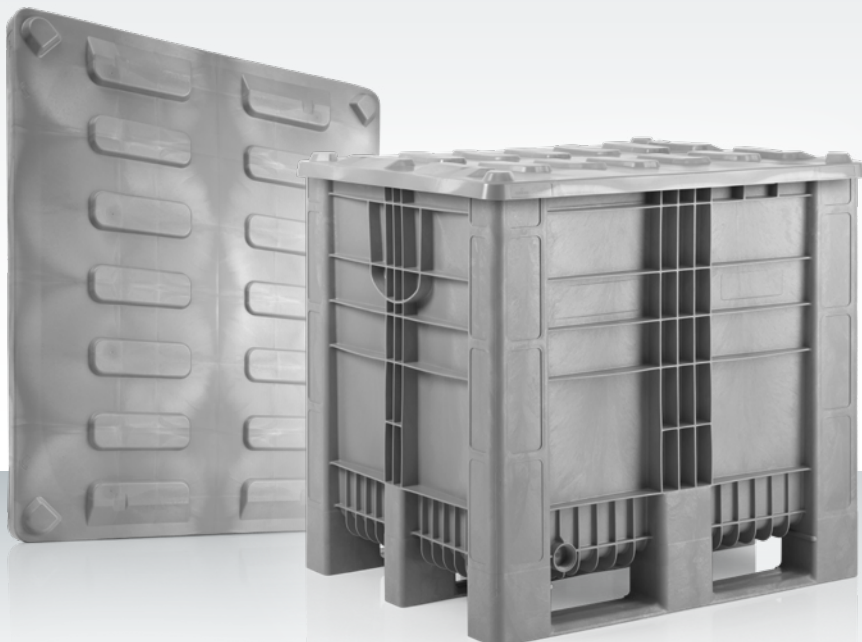
**CB3 High** | Pallet box in industrial format (preliminary data – errors and omissions excepted)

### Technical data<sup>\*1</sup>

External dimension L x W x H (mm): 1200 × 1000 × 1140  
Internal dimension L x W x H (mm): 1108 × 897 × 983  
Material\*<sup>2</sup>: PE  
Volume (l): ~ 1000  
Weight (kg): 49.0 (3 runners) / 46.0 (9 feet)

### Available versions:

- 3 runners or 9 feet
- Drain port with 1 inch and 2 inch thread (closed or open)
- Standard colours ■



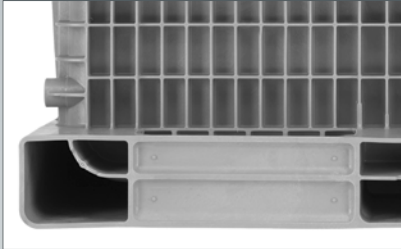
### Accessories | Custom-fit lid

#### Technical data<sup>\*1</sup>

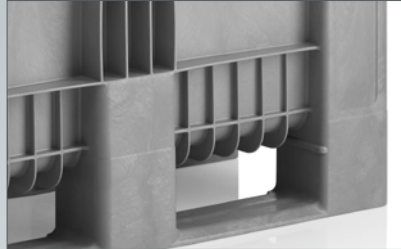
External dimension  
L x W x H (mm): 1237 × 1036 × 63  
Internal dimension  
L x W x H (mm): 1215 × 1013  
Material\*<sup>2</sup>: PE  
Weight (kg): 6,5

Quality, the best value.

## All advantages at a glance:



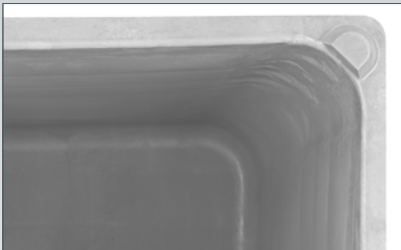
**One-piece injection moulded** with extra strong runners/feet



**Ram protection** through additional ribs on the sides, for increased resistance to forklift tines



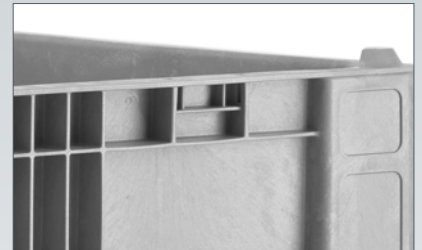
Secure **interlocking** through integrated interlocking corners



**Smooth interior walls** for easy emptying and cleaning



**Drain port** with closed or open thread



**Integrated transponder bracket** for optional use of RFID tags



**Labelling fields** for individual logos, lettering or numbering



Custom-fit **lid** available

## Do you have questions or require detailed information? We are happy to advise you.

**Germany (Headquarters)**  
**Craemer GmbH**  
 Brockner Straße 1  
 33442 Herzebrock-Clarholz  
 Germany

Tel.: +49 5245 43-0  
 Fax: +49 5245 43-201  
 E-mail: [info@craemer.com](mailto:info@craemer.com)  
[www.craemer.com/en](http://www.craemer.com/en)

**United Kingdom**  
**Craemer UK Ltd**  
 Craemer House  
 Hortonwood  
 Telford, Shropshire TF1 7GN  
 United Kingdom

Freephone: 0800 032 4291  
 Tel.: +44 1952 6078-00  
 Fax: +44 1952 6078-01  
 E-mail: [info@craemer.com](mailto:info@craemer.com)  
[www.craemer.co.uk](http://www.craemer.co.uk)

[www.craemer.com](http://www.craemer.com)

<sup>1</sup> All technical data include characteristic features, which have been tested under specially defined conditions. Varying data may result from different conditions of usage such as loading method, prevailing temperature and length of storage time. All data and specified information are subject to change without notice. Our service team is pleased to be at your disposal to check the special requirements of your individual application.

<sup>2</sup> Our service team is pleased to be at your disposal if you require exact information about material compositions.

<sup>3</sup> Stacking Load: with a holding capacity of 1000 kg at approx. 20°C. Dynamic Load: on a forklift with an evenly distributed load at a room temperature of approx. 20°C.